



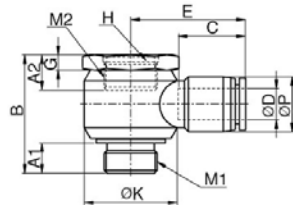
### BHF

Universal Quick



MODEL [ØD-T]

Tube (Metric) - Thread(R)		
MODEL	ØD	M
BHF 0408	4	M8
BHF 0608	6	M8
BHF 0612	6	M12
BHF 0812	8	M12
BHF 0814	8	M14
BHF 1014	10	M14
BHF 1214	12	M14
BHF 1218	12	M18



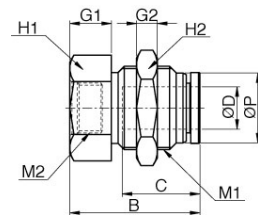
### BMF

Bulkhead Reducer



MODEL [ØD-T]

Tube (Metric) - Thread(R)		
MODEL	ØD	M
BMF 04M8	4	M8
BMF 06M8	6	M8
BMF 06M12	6	M12
BMF 08M12	8	M12
BMF 08M14	8	M14
BMF 10M12	10	M12
BMF 10M14	10	M14
BMF 12M14	12	M14
BMF 12M18	12	M18



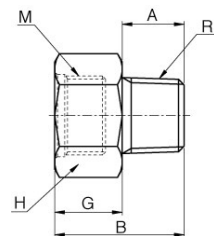
### BMR

Bush



MODEL [ØD-T]

Tube (Metric) - Thread(R)		
MODEL	M	R
BMR 0801	M8	R1/8
BMR 1201	M12	R1/8
BMR 1202	M12	R1/4
BMR 1203	M12	R3/8
BMR 1402	M14	R1/4
BMR 1403	M14	R3/8
BMR 1404	M14	R1/2
BMR 1803	M18	R3/8
BMR 1804	M18	R1/2



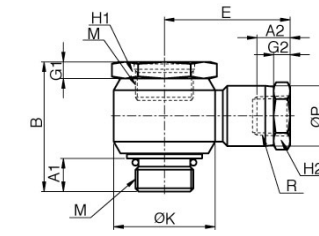
### BHMR

Universal Rc Thread



MODEL [ØD-T]

Tube (Metric) - Thread(R)		
MODEL	M	R
BHMR 08M5	M8	M5
BHMR 08M6	M8	M6
BHMR 0801	M8	R1/8
BHMR 12M6	M12	M6
BHMR 1201	M12	R1/8
BHMR 1401	M14	R1/8
BHMR 1402	M14	R1/4
BHMR 1802	M18	R1/4



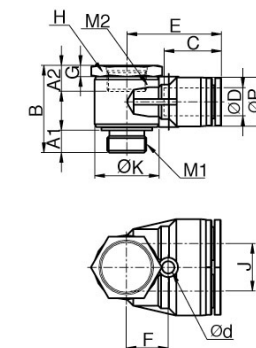
### BHWF

Universal Branch



MODEL [ØD-T]

Tube (Metric) - Thread(R)		
MODEL	ØD	M
BHWF 1014	10	M14
BHWF 1218	12	M18



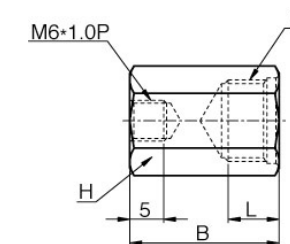
### BCM

Cap



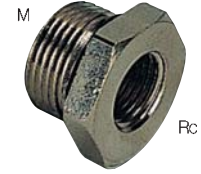
MODEL [ØD-T]

Tube (Metric) - Thread(R)	
MODEL	M
BCM 08	M8
BCM 12	M12
BCM 14	M14
BCM 18	M18



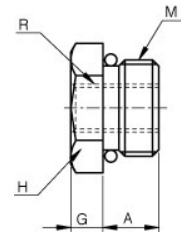
# BRM

Bush



MODEL [ØD-T]

Tube (Metric) - Thread(R)		
MODEL	M	Rc
BRM 08M5	M8	M5
BRM 12M6	M12	M6
BRM 1401	M14	R1/8
BRM 1802	M18	R1/4



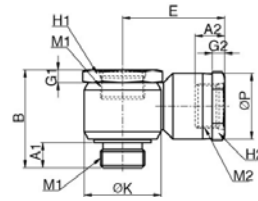
# BHM

Universal M Thread



MODEL [ØD-T]

Tube (Metric) - Thread(R)		
MODEL	M1	M2
BHM 1208	M12	M8
BHM 1212	M12	M12
BHM 1412	M14	M12
BHM 1414	M14	M14
BHM 1814	M18	M14



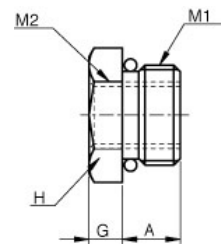
# BMM

Bush



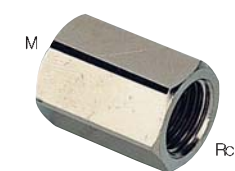
MODEL [ØD-T]

Tube (Metric) - Thread(R)		
MODEL	M1	M2
BMM 1208	M12	M8
BMM 1412	M14	M12
BMM 1814	M18	M14



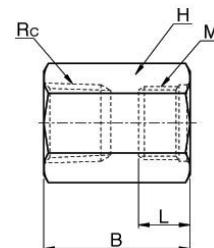
# BUMR

Socket



MODEL [ØD-T]

Tube (Metric) - Thread(R)		
MODEL	Rc	M
BUMR 0801	Rc1/8	M8
BUMR 1202	Rc1/4	M12
BUMR 1403	Rc3/8	M14
BUMR 1804	Rc1/2	M18



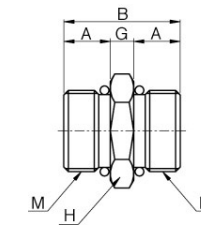
# BUMM

Nipple



MODEL [ØD-T]

Tube (Metric) - Thread(R)	
MODEL	M
BUMM 0808	M8
BUMM 1212	M12
BUMM 1414	M14
BUMM 1818	M18



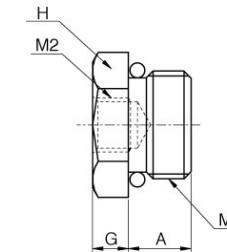
# BPM

Plug



MODEL [ØD-T]

Tube (Metric) - Thread(R)		
MODEL	M1	M2
BPM 08	M8	M6
BPM 12	M12	M6
BPM 14	M14	M6
BPM 18	M18	M6



# BL

Elbow



MODEL [ØD-T]

Tube (Metric) - Thread(R)		
MODEL	R	M
BL 0801	R1/8	M8
BL 1201	R1/8	M12
BL 1202	R1/4	M12
BL 1402	R1/4	M14
BL 1403	R3/8	M14
BL 1404	R1/2	M14
BL 1803	R3/8	M18
BL 1804	R1/2	M18

