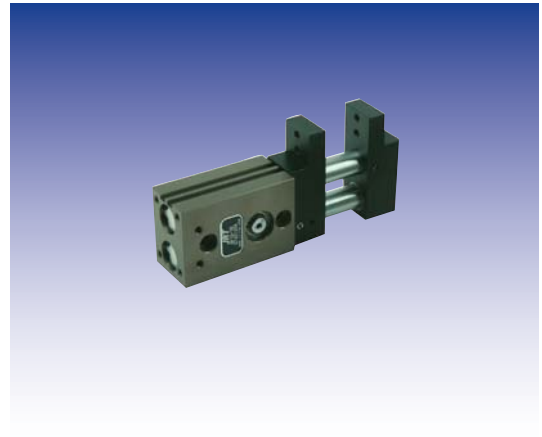


Gripper

AF15-12,16,20

Character

- Rack & pinion type
- Jaw is located on one side of gripper body
- Suitable for gripping system of moving the rotation
- Magnetic sensor is available for open-close sensing



Rack & pinion type

Positioning of sensor

for magnetic sensor

Kinetics

pinion / toothed rack system, centric gripping

Drive

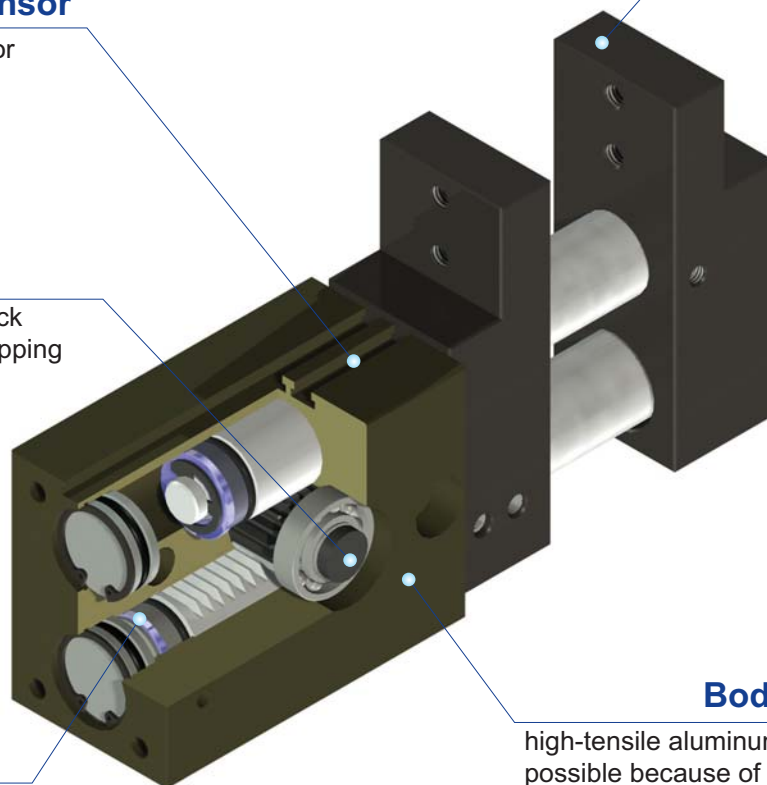
double acting pneumatic cylinder

Base jaw

for fitting the workpiece specific gripper fingers

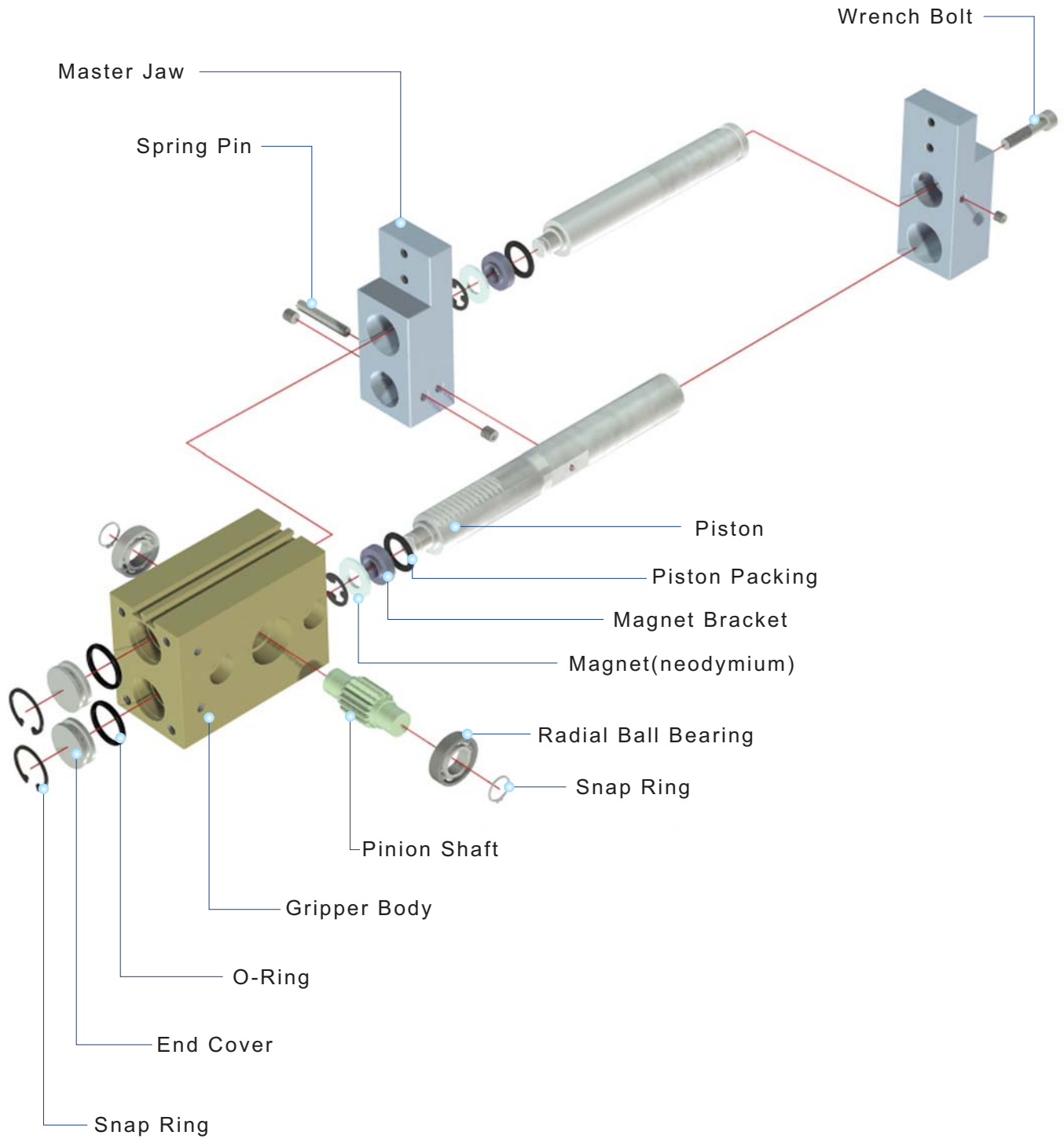
Body

high-tensile aluminum body lightest with possible because of hard anodizing



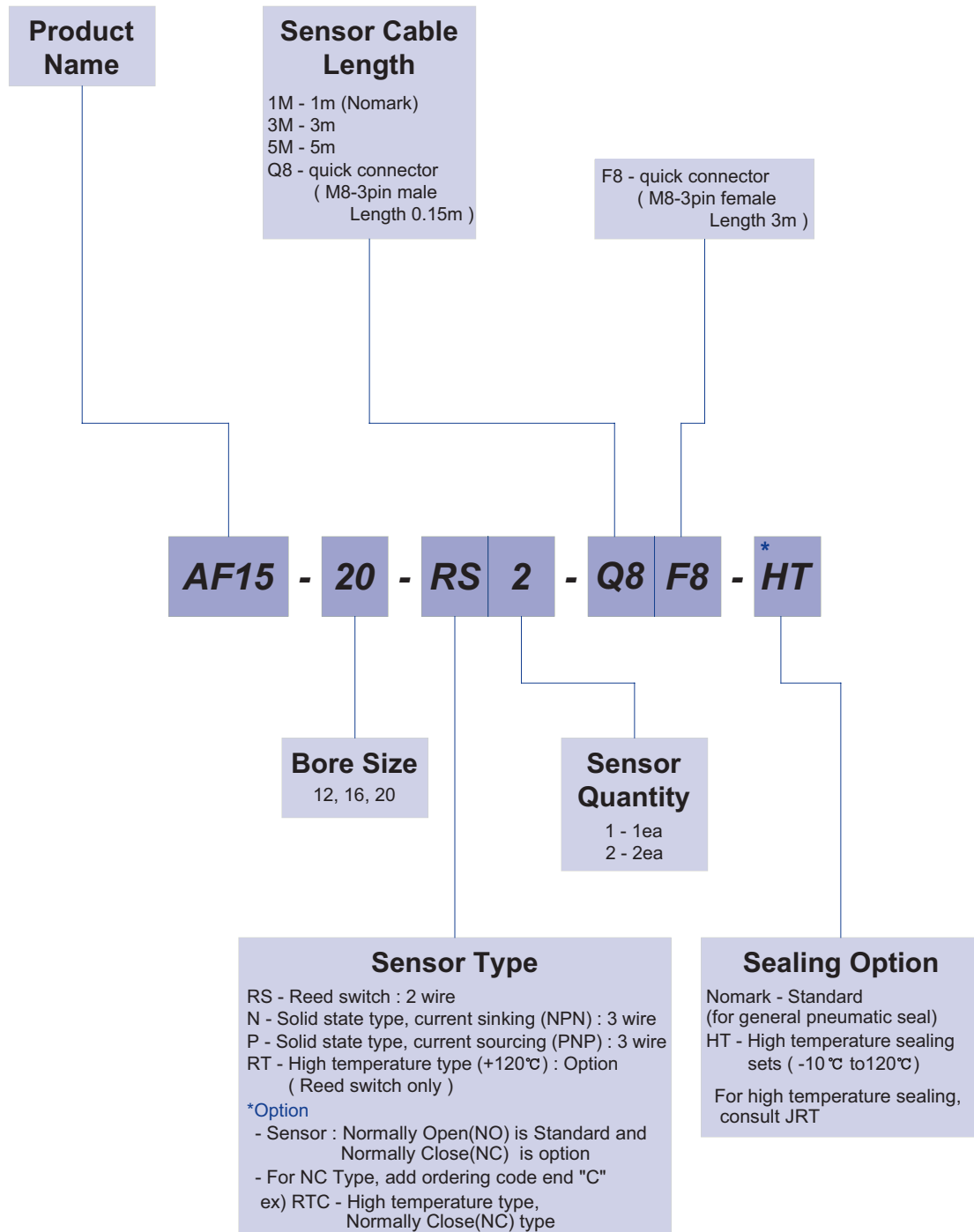
AF15

Exploded view



AF15

Ordering Code



The delivery of * mark option is longer than a standard, So inquire of JRT

AF15

Specification

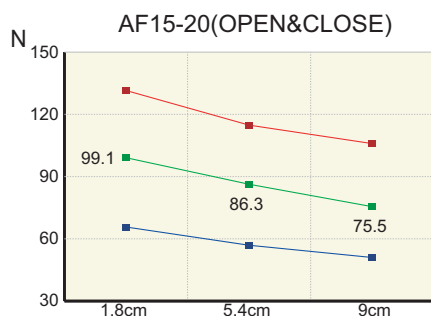
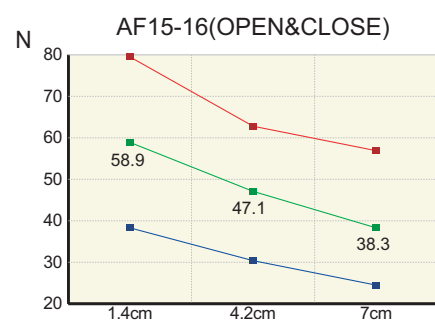
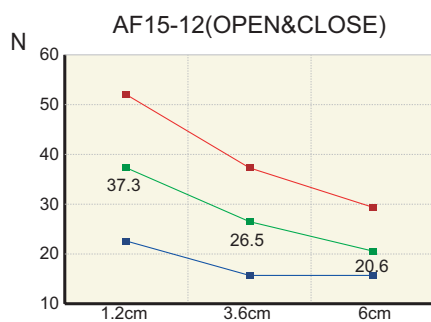
P=Air Pressure[bar] , L=Exertion length[mm]

Products Name	AF15-12	AF15-16	AF15-20	Unit
Stroke	20	30	36	mm
Weight	043	0.81	1.6	kg
Max. length of attach	60	70	90	mm
Fitting size	M5	M5	M5	
Gripping force:Open	46.11P/(5+0.1L)	107.91(P+0.7)/(9+0.1L)	392.4(P+1)/(22+0.1L)	N
Gripping force:Close				
Air consumption per cycle	1.1	3.0	5.7	cm ³
Closing / Opening time	0.01 / 0.01	0.01 / 0.01	0.01 / 0.01	sec
* Repeat accuracy	0.01	0.01	0.01	mm
Max.cycle per minute	60	40	40	
Operating pressure	3~7			bar
Ambient temperature	-5 to 60			°C
Lubrication	Needless			

* After 100 consecutive strokes to end positions

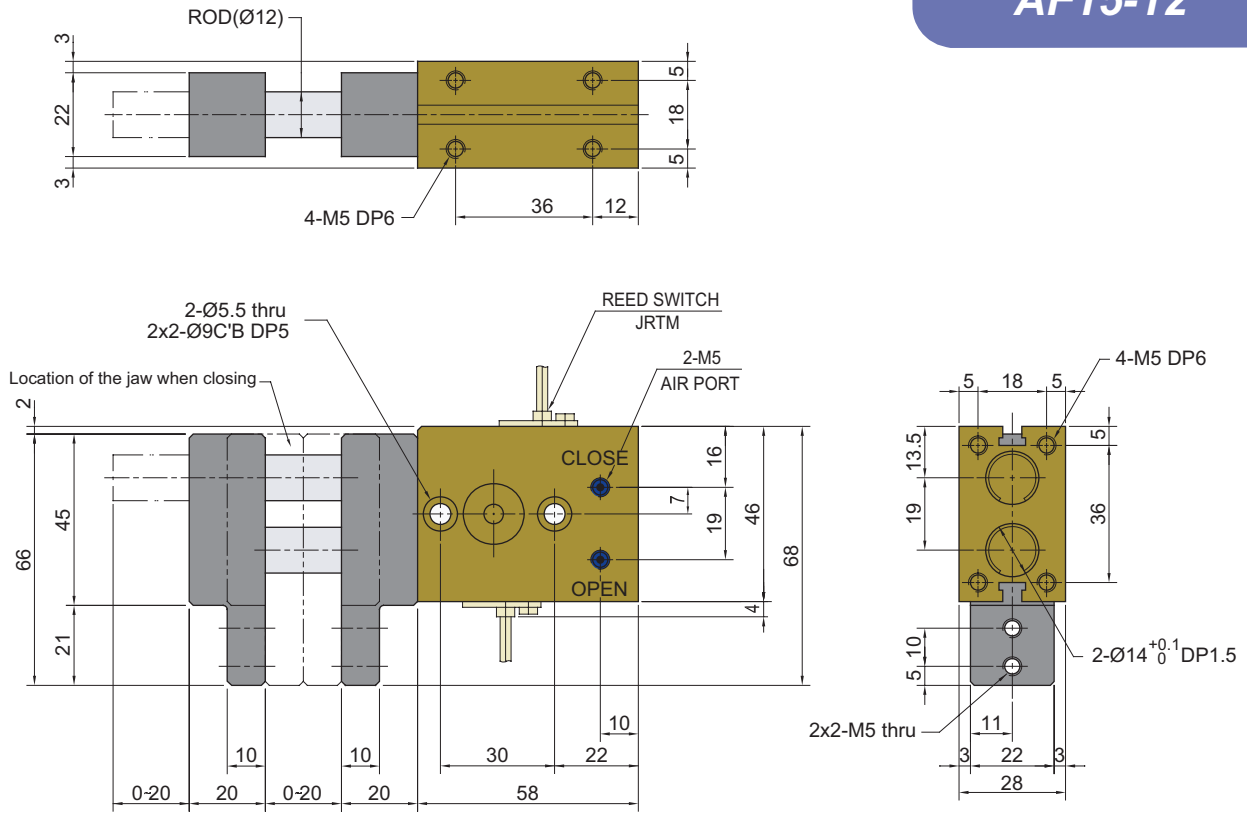
Gripping Force per exertion length

Legend : —■— 7[bar] —■— 5[bar] —■— 3[bar]

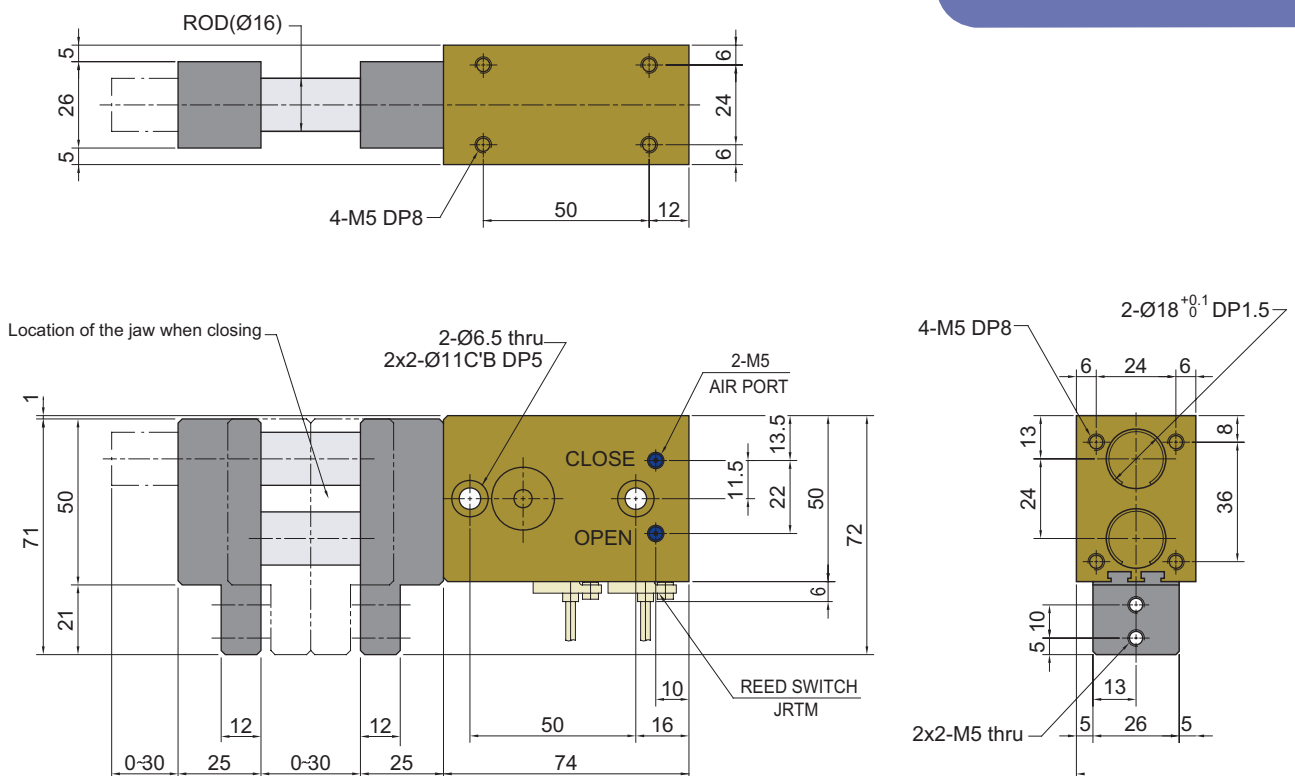


AF15

AF15-12

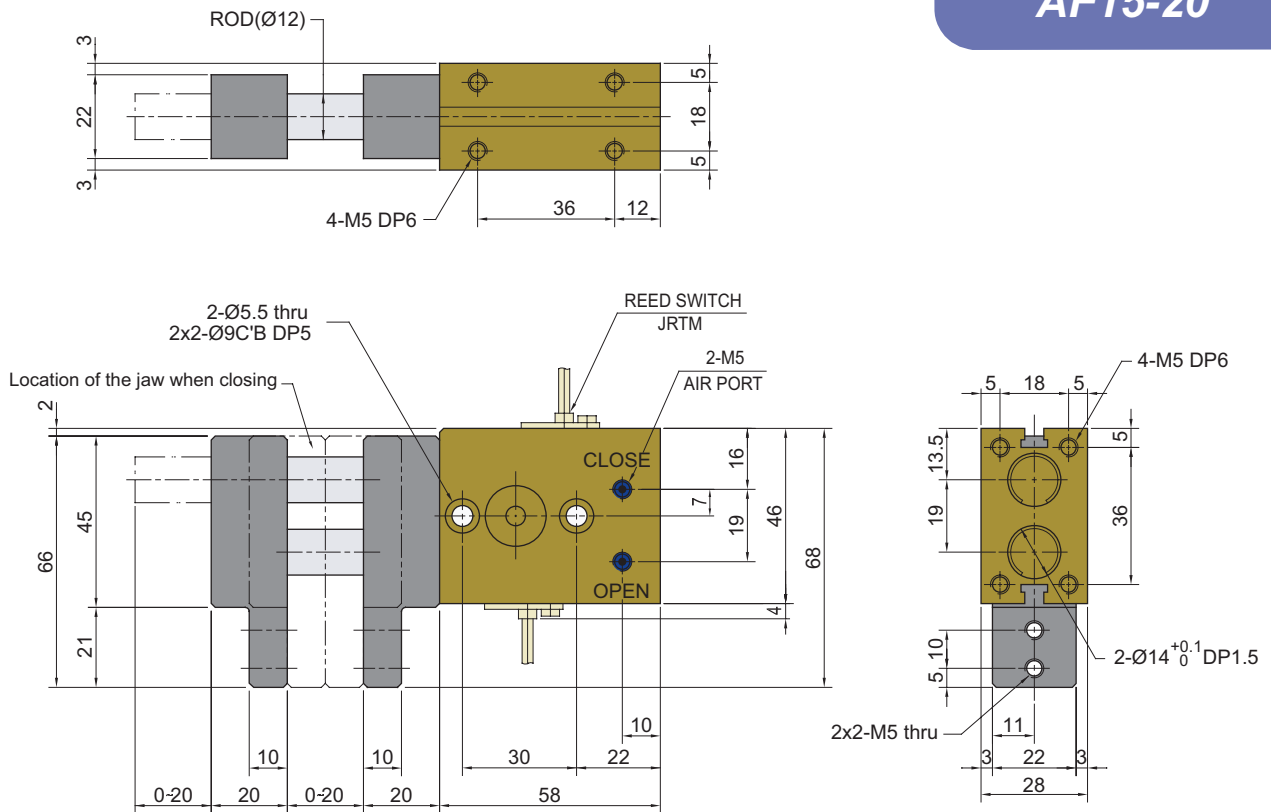


AF15-16



AF15

AF15-20



Note