

Gripper

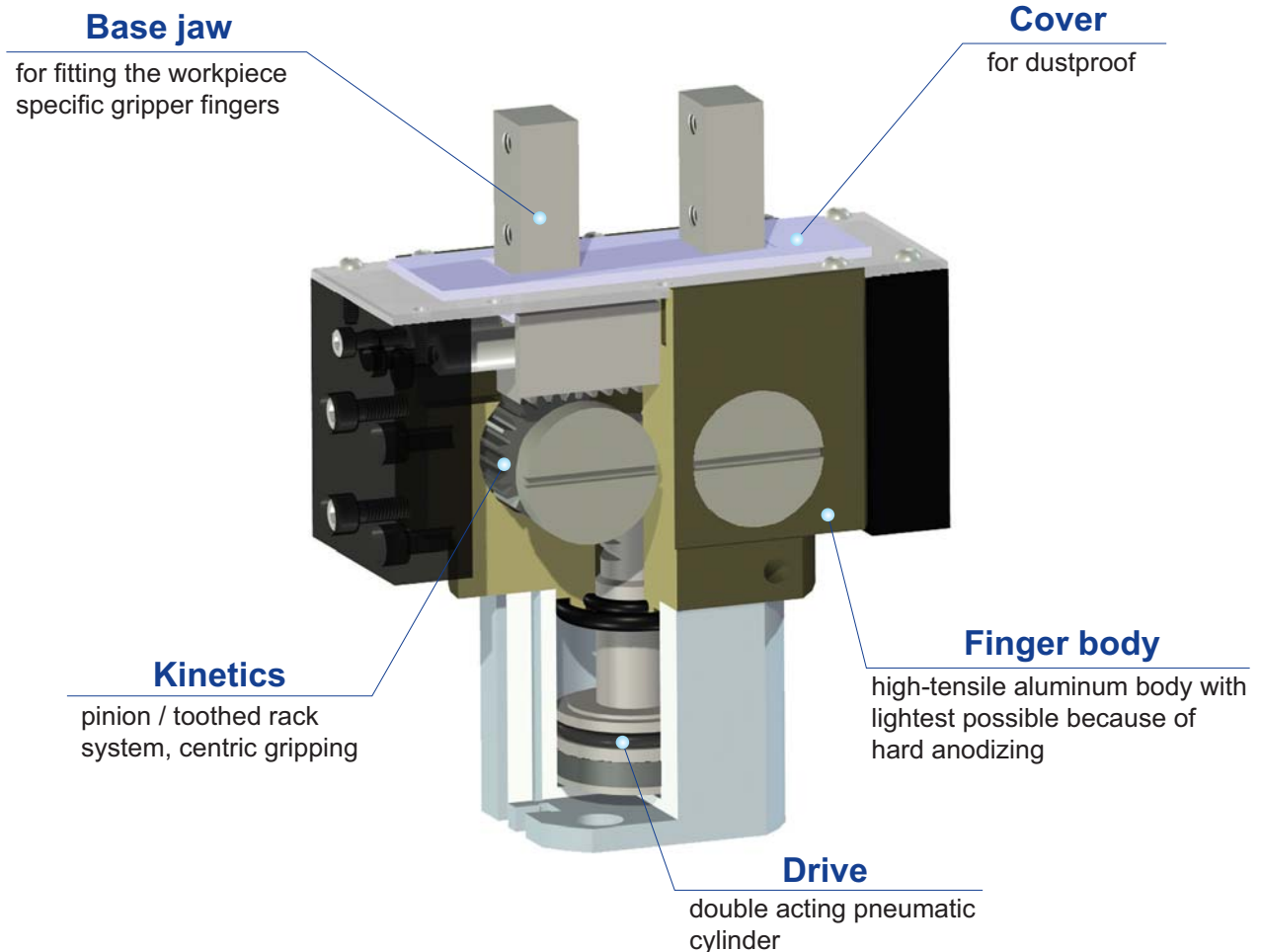
AF13C-20,30,40,50

Character

- Rack & Pinion type (AF13C-20 is Link & Lever type)
- High repeatability by guide rod sliding
- Wide and various selection possible by various size
- Mounting possible from 3 sides
- Magnetic sensor is available for open-close sensing
- AF13+ dustproof cover type

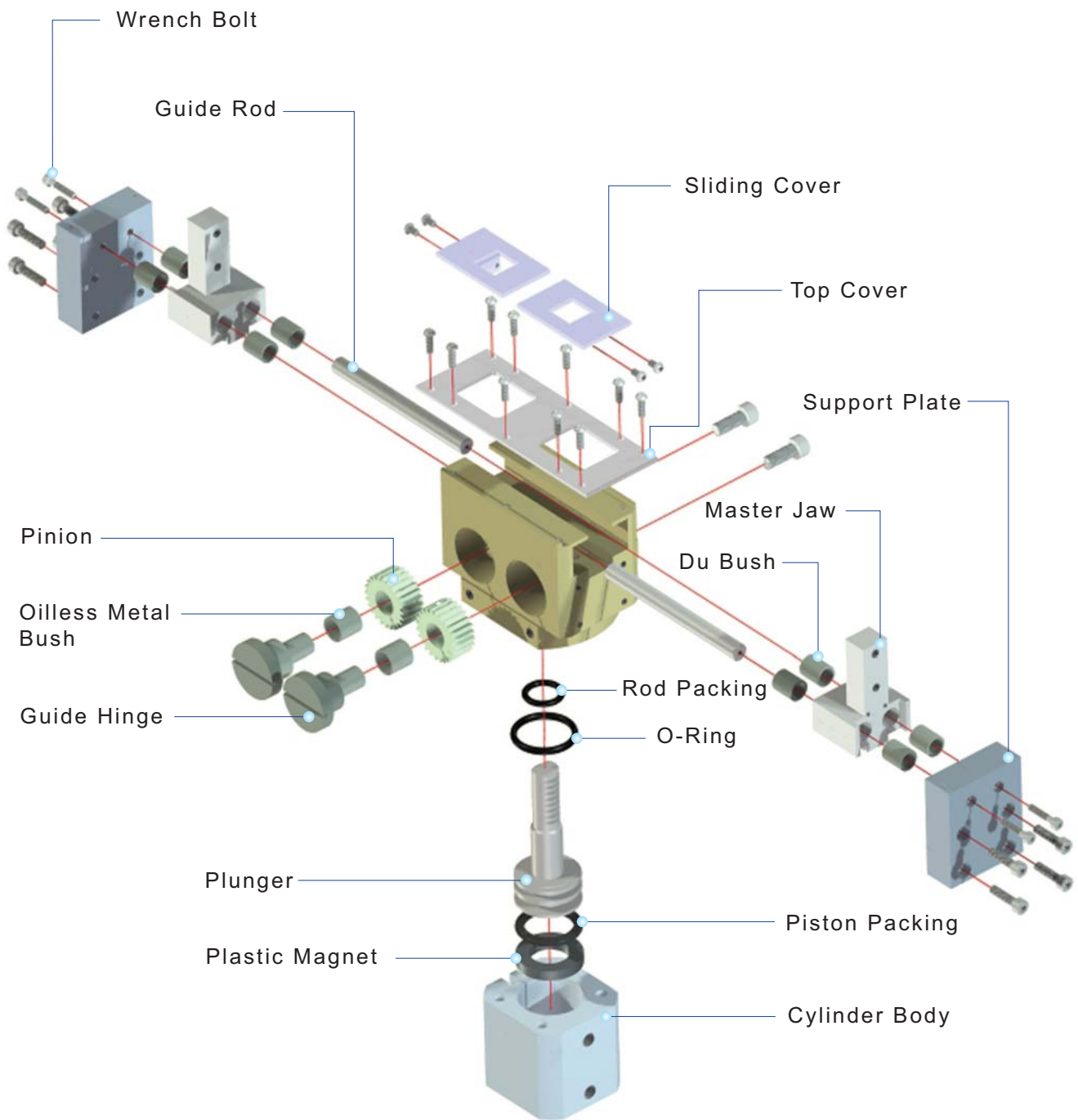


Rack & pinion type



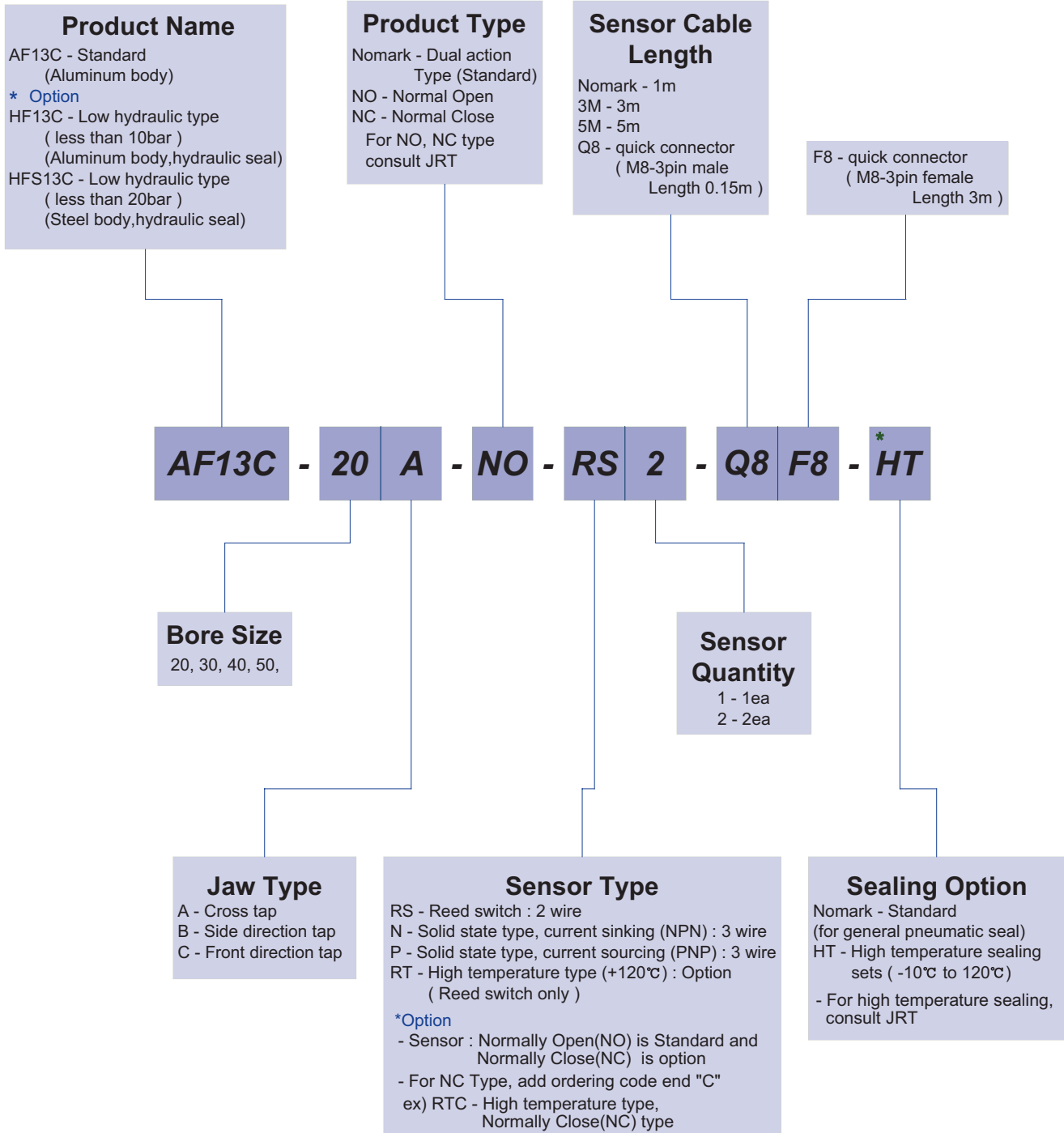
AF13C

Exploded view



AF13C

Ordering Code



The delivery of * mark option is longer than a standard, So inquire of JRT

AF13C

Specification

P=Air Pressure[bar] , L=Exertion length[mm]

Products Name	AF13C-20	AF13C-30	AF13C-40	AF13C-50	Unit
Stroke	12	24	30	36	mm
Weight	0.55	1.44	2.2	3.7	kg
Max. length of attach	70	90	110	130	mm
Fitting size	M5	PF(G) 1/8	PF(G) 1/8	PF(G) 1/8	
Gripping force:Open	24.53P/(1+0.025L)	55.92P/(1+0.02L)	98.1P/(1+0.02L)	154.02P/(1+0.015L)	N
Gripping force:Close	19.62P/(1+0.025L)	48.07P/(1+0.02L)	83.39P/(1+0.02L)	137.34P/(1+0.015L)	N
Air consumption per cycle	3.3	15.1	33.9	65.0	cm ³
Closing / Opening time	0.01 / 0.01	0.01 / 0.01	0.01 / 0.02	0.03 / 0.04	sec
* Repeat accuracy	0.01	0.01	0.01	0.01	mm
Max.cycle per minute	60	60	60	40	
Operating pressure	3~7				bar
Ambient temperature	-5 to 60				°C
Lubrication	Needless				

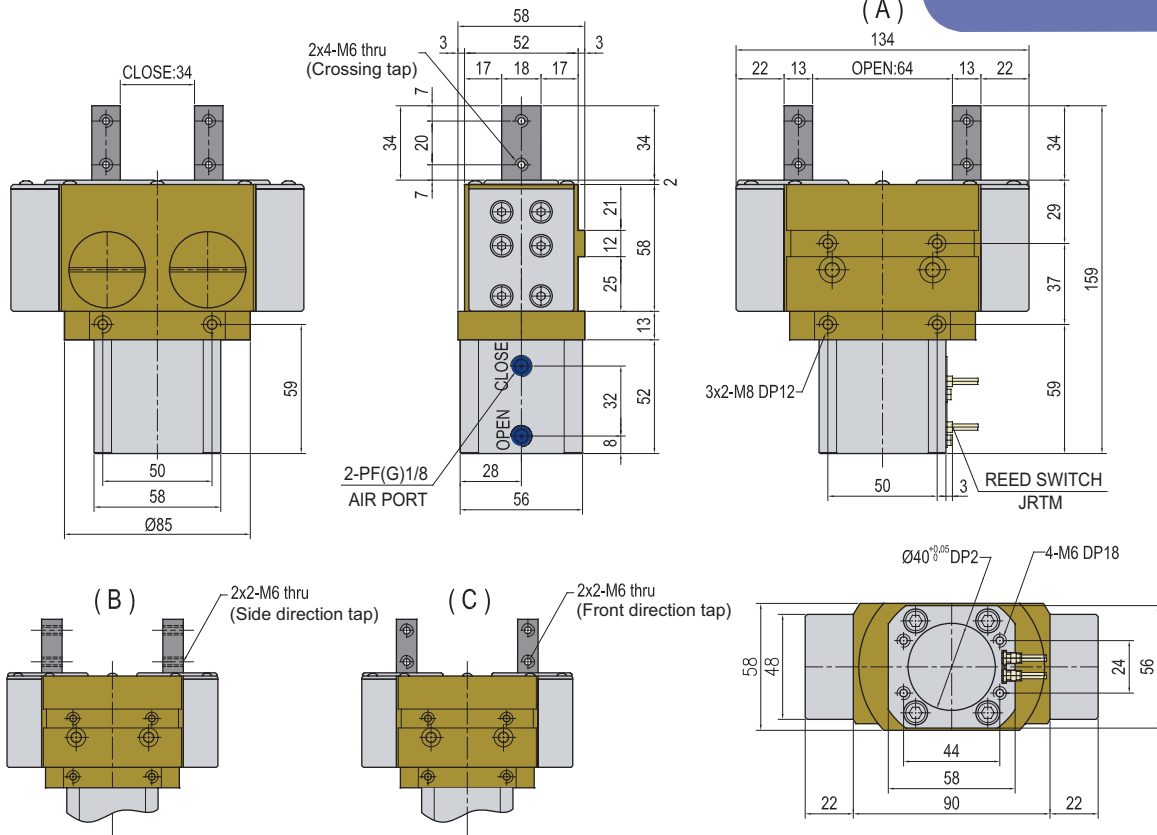
* After 100 consecutive strokes to end positions

※ See AF13 Gripping Force Graph

Note

AF13C

AF13C-40



AF13C-50

