

Sang-A



SANG-A PNEUMATIC CO., LTD.
#36, SECHEON-RO 3-GIL, DASA-EUP,
DALSEONG-GUN, DAEGU, KOREA
Tel:82-53-583-5200, Fax:82-53-583-5208
<http://www.sanga2000.com>
E-mail:sang-a@sanga2000.com

HAND VALVES

Application

- Used for turning air pressure on and off for pneumatic devices.

Feature

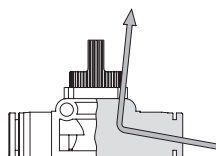
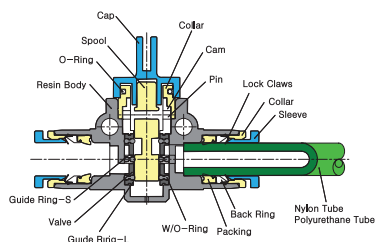
- When off, the three-way direction control valve discharges the residual pressure and blocks air flow-in.

Specification

Fluid	Air(No other gases or liquids)	
Working Pressure Range	0~150PSI	0~9Kg/cm ² (0~900kPa)
Negative Pressure	-29.50 in Hg	-750mmHg(10Torr)
Temperature Range	32~140° F	0~60° C
Applicable Tube Material	Polyurethane and Nylon	



Structural Diagram



► 3 Way Direction, 2 Way Direction

- The three-way direction control valve, when the air is stopped, discharges residual pressure to the outlet, which assures safety in repairing or adjusting connected devices.
- The two-way direction control valve does not discharge residual pressure, and is suitable for a reservoir tank or other device that does not require a discharging residual pressure.
- The two-way direction control valve is also suitable for the system where a vacuum pipe is used.

⚠ CAUTION

- Be sure to read the "Common Precautions" and "Using Precautions of Fitting Series"(P6) before using.
- When operating handle, turn at a right angle(90°), otherwise it may cause a shortage of fluid.

Product Code System

HVFS 06 - 01

① ② ③

(1) Type

(2) Tube Dia(∅D)

Code	06	08	10	12
Dia	∅6	∅8	∅10	∅12

(3) Thread Size(T)

	Taper Pipe Thread			
Code	01	02	03	04
Size	R1/8	R1/4	R3/8	R1/2

Hand Valves



Fitting with G Thread (O-Ring)



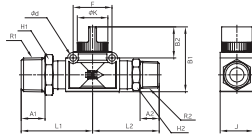
HVSS



MODEL [ØD-T]

Tube (Metric) - Thread(R)

MODEL	R1	R2
HVSS 01-01	R1/8	R1/8
HVSS 02-01	R1/4	R1/8
HVSS 02-02	R1/4	R1/4
HVSS 03-02	R3/8	R1/4
HVSS 03-03	R3/8	R3/8
HVSS 04-03	R1/2	R3/8
HVSS 04-04	R1/2	R1/2



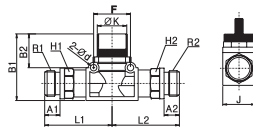
HVSS-G



MODEL [ØD-T]

Tube (Metric) - Thread(G)

MODEL	R1	R2
HVSS G01-G01	G1/8	G1/8
HVSS G02-G01	G1/4	G1/8
HVSS G02-G02	G1/4	G1/4
HVSS G03-G02	G3/8	G1/4
HVSS G03-G03	G3/8	G3/8
HVSS G04-G03	G1/2	G3/8
HVSS G04-G04	G1/2	G1/2



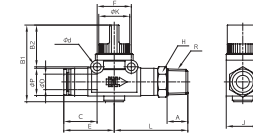
HVFS



MODEL [ØD-T]

Tube (Metric) - Thread(R)

MODEL	ØD	R
HVFS 06-01	6	R1/8
HVFS 06-02	6	R1/4
HVFS 06-03	6	R3/8
HVFS 08-01	8	R1/8
HVFS 08-02	8	R1/4
HVFS 08-03	8	R3/8
HVFS 10-02	10	R1/4
HVFS 10-03	10	R3/8
HVFS 10-04	10	R1/2
HVFS 12-02	12	R1/4
HVFS 12-03	12	R3/8
HVFS 12-04	12	R1/2



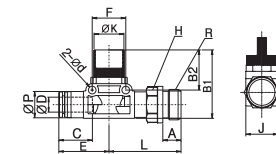
HVFS-G



MODEL [ØD-T]

Tube (Metric) - Thread(G)

MODEL	ØD	R
HVFS 06-G01	6	G1/8
HVFS 06-G02	6	G1/4
HVFS 06-G03	6	G3/8
HVFS 08-G01	8	G1/8
HVFS 08-G02	8	G1/4
HVFS 08-G03	8	G3/8
HVFS 10-G02	10	G1/4
HVFS 10-G03	10	G3/8
HVFS 10-G04	10	G1/2
HVFS 12-G02	12	G1/4
HVFS 12-G03	12	G3/8
HVFS 12-G04	12	G1/2



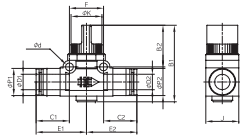
HVFF

Union Straight



MODEL [ØD-T]

Tube (Metric) - Thread(R)		
MODEL	ØD1	ØD2
HVFF 06-06	6	6
HVFF 08-06	8	6
HVFF 08-08	8	8
HVFF 10-10	10	10
HVFF 12-10	12	10
HVFF 12-12	12	12



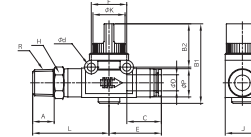
HVSF

Straight Thread-Fitting



MODEL [ØD-T]

Tube (Metric) - Thread(R)		
MODEL	ØD	ØP
HVSF 06-01	6	R1/8
HVSF 06-02	6	R1/4
HVSF 06-03	6	R3/8
HVSF 08-01	8	R1/8
HVSF 08-02	8	R1/4
HVSF 08-03	8	R3/8
HVSF 10-02	10	R1/4
HVSF 10-03	10	R3/8
HVSF 10-04	10	R1/2
HVSF 12-02	12	R1/4
HVSF 12-03	12	R3/8
HVSF 12-04	12	R1/2



HVSF-G

Straight G Thread-Fitting



MODEL [ØD-T]

Tube (Metric) - Thread(G)		
MODEL	ØD	R
HVSF 06-G01	6	G1/8
HVSF 06-G02	6	G1/4
HVSF 06-G03	6	G3/8
HVSF 08-G01	8	G1/8
HVSF 08-G02	8	G1/4
HVSF 08-G03	8	G3/8
HVSF 10-G02	10	G1/4
HVSF 10-G03	10	G3/8
HVSF 10-G04	10	G1/2
HVSF 12-G02	12	G1/4
HVSF 12-G03	12	G3/8
HVSF 12-G04	12	G1/2

