

MATRIX | Pneumatic Division

High performance solutions for medical and healthcare applications

healthcare

Innovative patented technology, outstanding dynamic performances, ultra-fast and precise response times, proven reliability and unmatched operating life characteristics. Cost-effective flexible solutions expressly developed to match the requirements of modern medical and healthcare systems supported by professional knowhow and specific expertise.

MATRIX | Pneumatic Division

T +39 0125 615442 | F +39 0125 615377 | info@matrix.to.it

MATRIX | Pneumatic Division

High performance solutions for medical and healthcare applications

320 Series

High performance miniature valve | 3/2 or 2/2

Flowrate: 25 l/min @ 6 bar

Response time: down to 2 ms

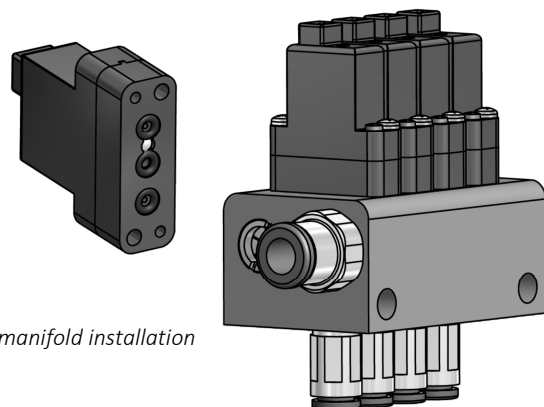
Pressure range: 0-8 bar

Electric connection: IP62 PicoSpox type integrated connector

Footprint: 8x23 mm

Weight: 15 gr

Individual versions for direct mounting with push-in fittings and sub-base versions for manifold installation



720 Series

High performance valve | 3/2 or 2/2

Flowrate: 50, 80, 100 l/min @ 6 bar

Response time: down to 2 ms

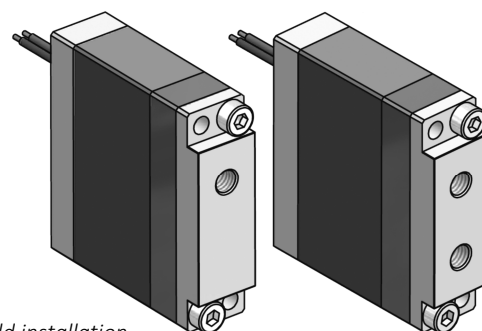
Pressure range: vacuum - 8 bar

Electric connection: IP62 integrated cables

Footprint: 12x41 mm

Weight: 35 gr

Individual versions for direct mounting with push-in fittings and sub-base versions for manifold installation



GM720 Series

High performance manifold units | 3/2 or 2/2 or 5/2

Flowrate: modular depending on the valve type and configuration

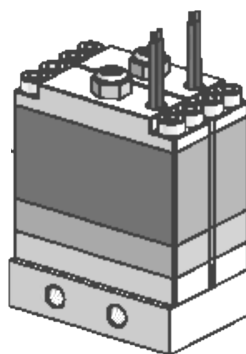
Response time: down to 2 ms

Pressure range: vacuum - 8 bar

Electric connection: IP62 integrated cables

Footprint: depending on configuration

Custom configurations available upon request



750 Series

High performance solenoid multi-valve | 3/2 or 2/2 or 3/3 or 5/2

Modular architecture: up to 8 independent outlets / controls (2/2 or 3/2)

Flowrate: from 50 l/min up to 700 l/min depending on the configuration

Response time: down to 2 ms

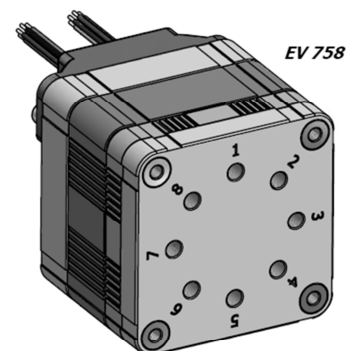
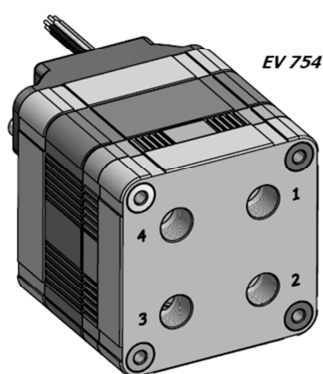
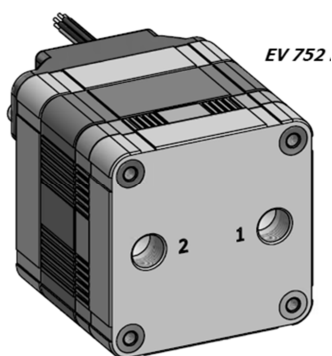
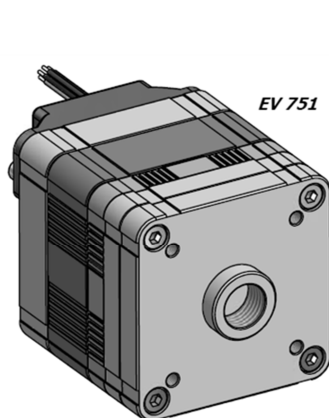
Pressure range: vacuum - 8 bar

Electric connection: IP62 or IP65 Easy Connection System (proprietary)

Footprint: 55x55 mm

Weight: 350 gr

Custom configurations available upon request



GM750 Series

High performance manifold units | 3/2 or 2/2 or 3/3 or 5/2

Flowrate: modular depending on the valve type and configuration

Response time: down to 2 ms

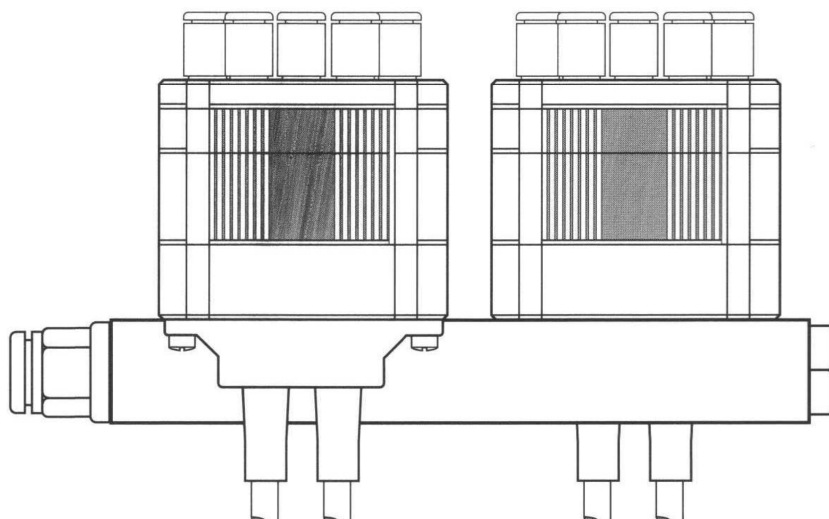
Pressure range: vacuum - 8 bar

Electric connection: IP62 or IP65 Easy Connection System (proprietary)

Footprint: depending on configuration

Weight: depending on configuration

Custom configurations available upon request



890 Series

Ultra high performance solenoid multi-valve

Modular architecture: up to 9 independent outlets

Flowrate: from 100 to 1600 l/min depending on the configuration

Response time: down to 1 ms

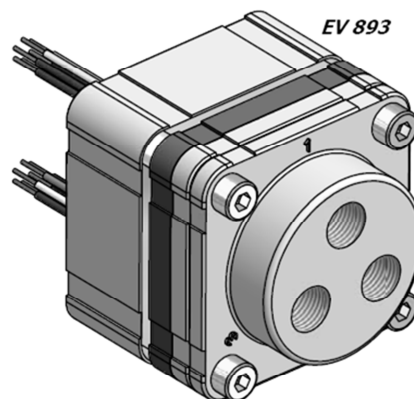
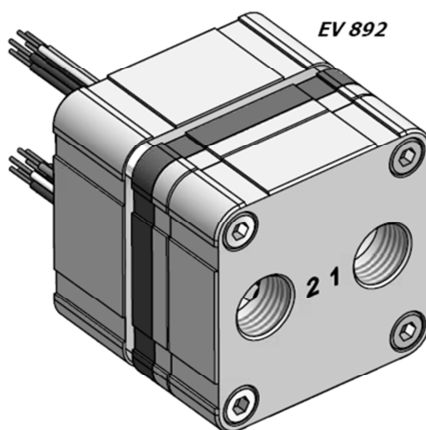
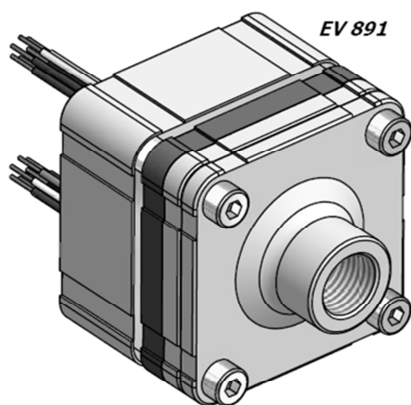
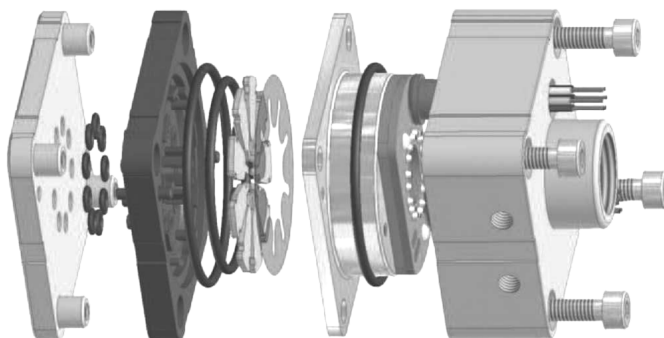
Pressure range: 2-8 bar

Electric connection: IP62 integrated cables

Footprint: 46x46 mm

Weight: 230 gr

Also available in other flowrate / outlets configurations



860 Series

High performance proportional solenoid multi-valve [PCM]

Modular architecture: up to 9 independent channels [PCM]

Flowrate: variable from 0,30 to 500 l/min (8 bit cfg)

Response time: down to 1 ms

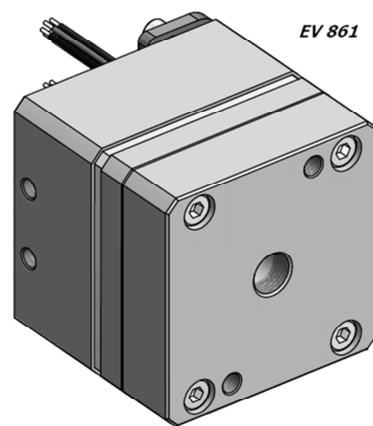
Pressure range: 0-6 bar

Electric connection: IP52 or IP65 Easy Connection System (proprietary)

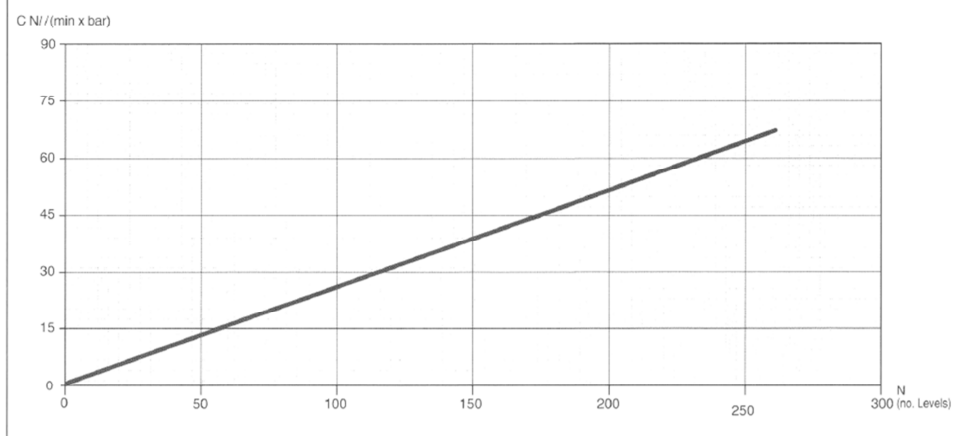
Footprint: 52x52 mm

Weight: 450 gr

Also available in other flowrate / outlets configurations



860 PCM Series - 256 flow levels version



EPR and SPR Series

High performance electronic proportional pressure regulators

Flowrate: from 50 up to 5.000 l/min

Reaction time: down to 5 ms

Pressure range: 1-16 bar

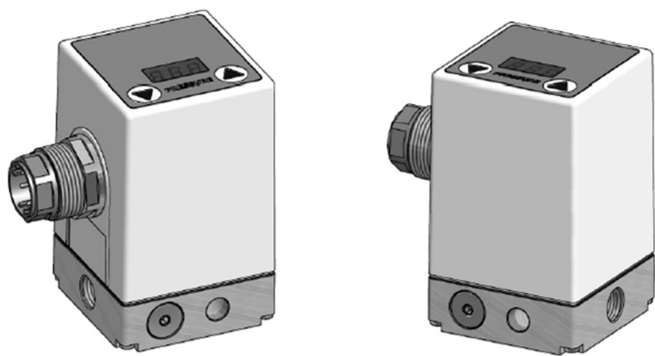
Electric connections: IP62 or IP65 integrated connector

Power supply: 24 VDC

Pneumatic connections: G1/4" G1/2"

Input type: 0-5 VDC, 0-10 VDC, RS-232, 4-20 mA

Custom configurations available upon request



020 Series

High flow vacuum / low pressure solenoid valve | 3/2

Flowrate: 180 l/min @ 350 mbar

Response time: down to 10 ms

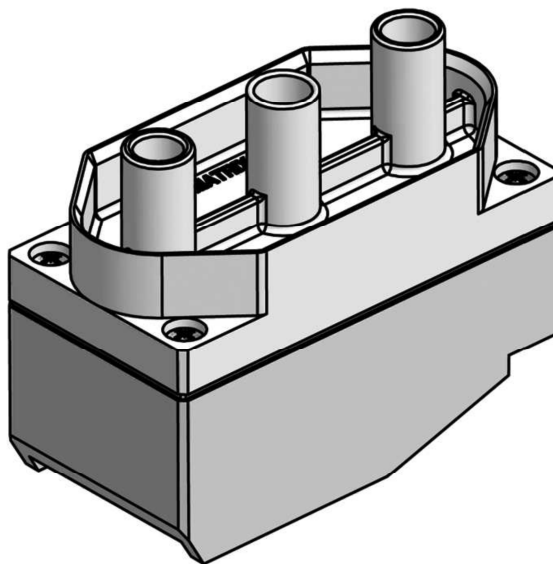
Pressure range: vacuum – 350 mbar

Electric connection: integrated Mas-Con type connector

Footprint: 36x70 mm

Weight: 90 gr

Custom configurations available upon request



HSDB930 | HSDB990 Series

High performance multi-channel speed-up driver boards

Number of channels: up to 9

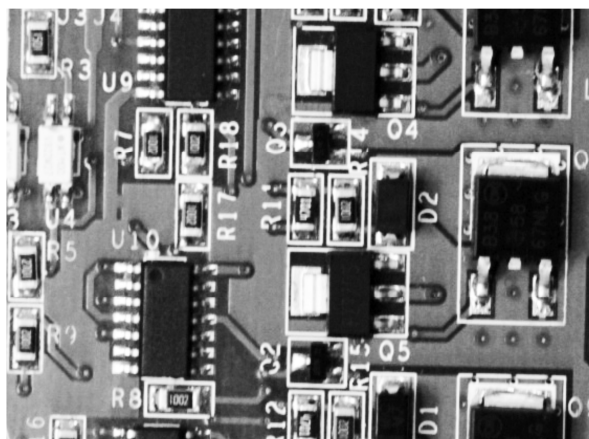
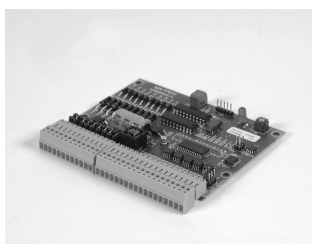
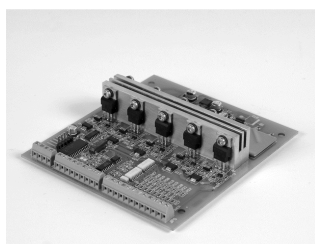
Power supply: 24 VDC

Logic input signals: 5 - 24 VDC

Max operating frequency: 500 Hz (depending on ejector model and configuration)

Electric connections: terminal block, multiple board connectors

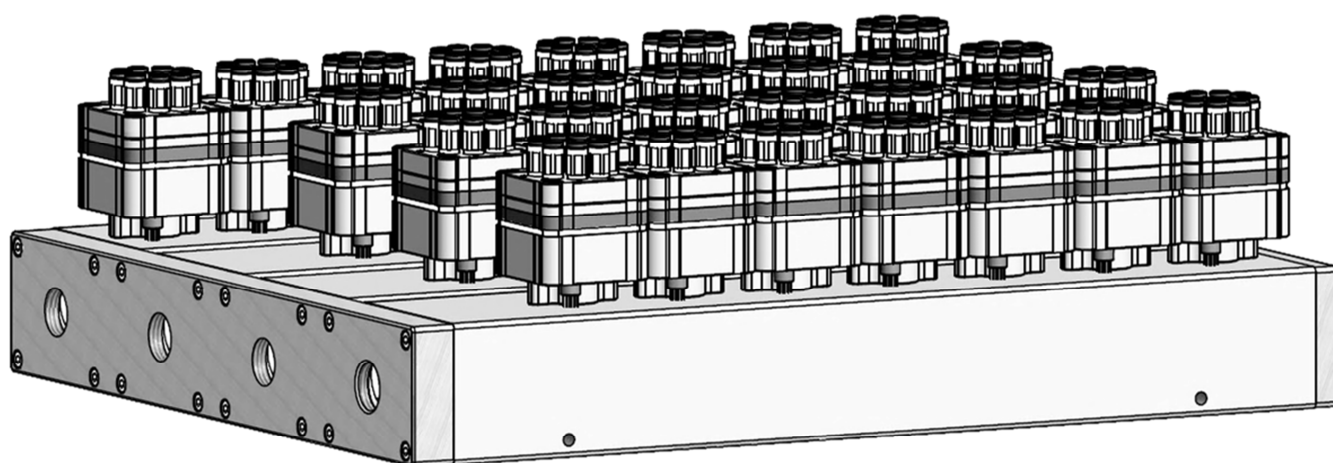
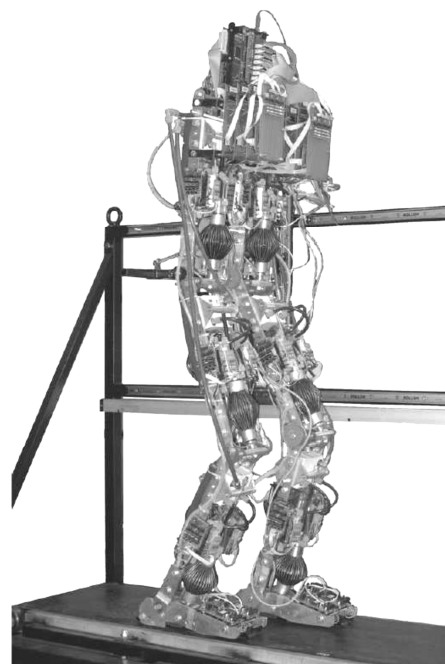
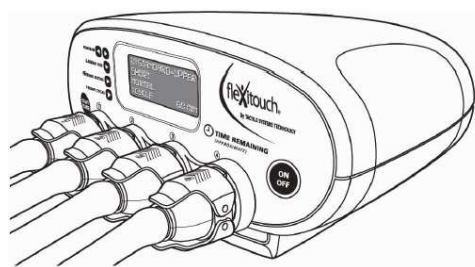
Custom configurations available upon request



Custom configurations and developments

To ease and support the implementation of our technology in each system we can design, develop and validate specific solutions to ensure an overall performance improvement both regarding the dynamic characteristics and reliability to match the requirements of each application. The expertise and knowhow guaranteed by our engineering team, the innovative technologic platform and the attitude for cooperation are key factors of our successful commitment and growth into the following fields of application:

Gas monitoring and control systems, anti-decubitus ulcers systems, ophthalmic surgical systems, skin treatment/regeneration systems, biomechanics systems, physical rehabilitation systems, anesthesia systems, critical care systems, lymphedema treatment medical devices, lipomassage systems, laboratory equipments, nebulization and infusion systems, pressotherapy applications, etc.



Your success, our challenge.