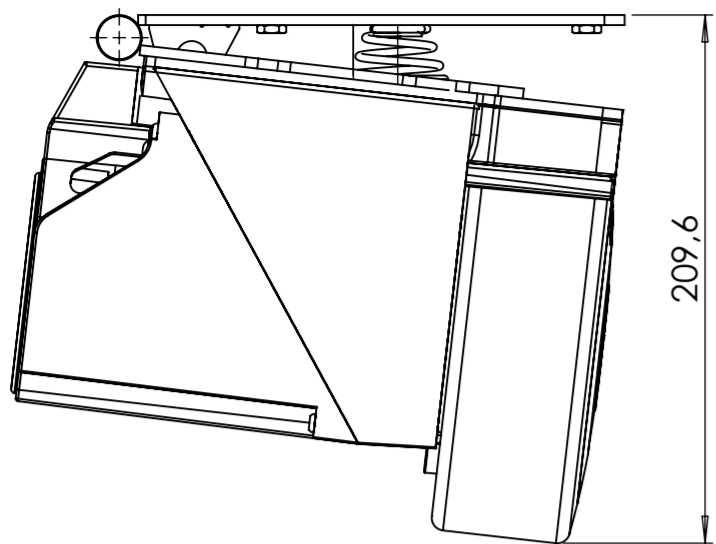
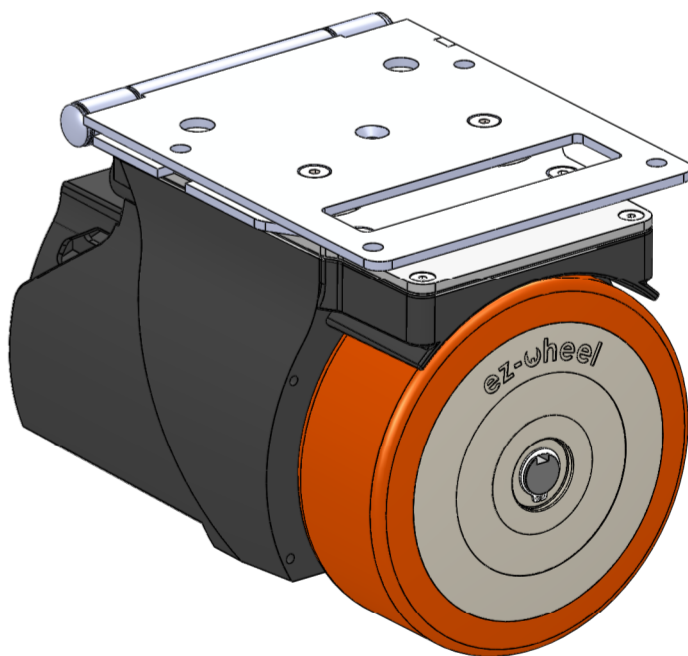
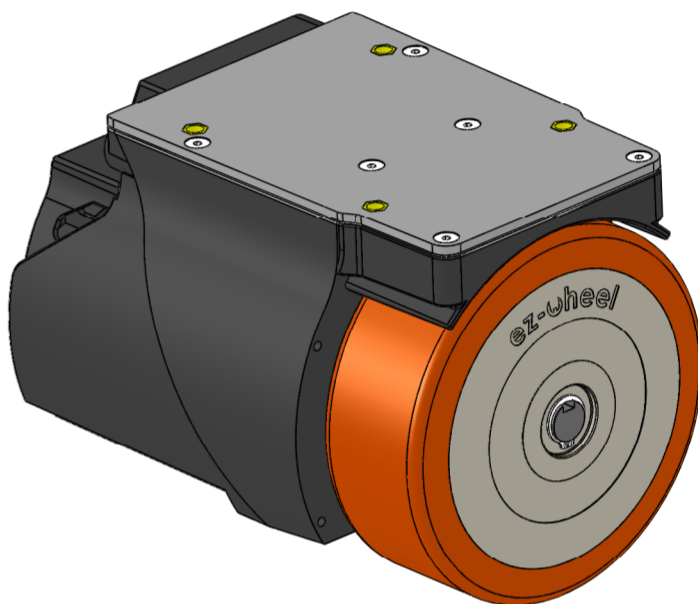
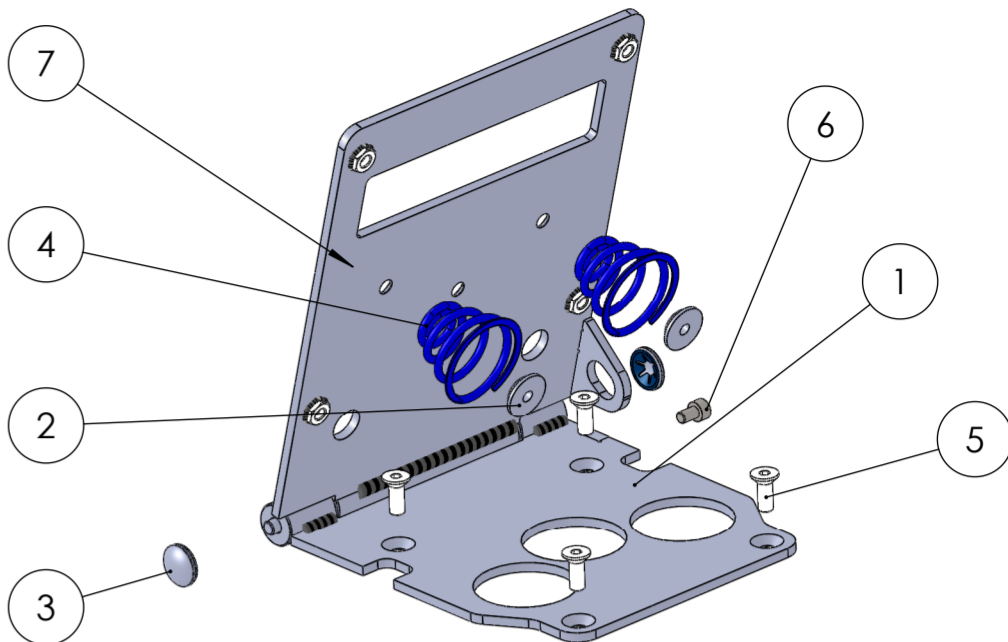
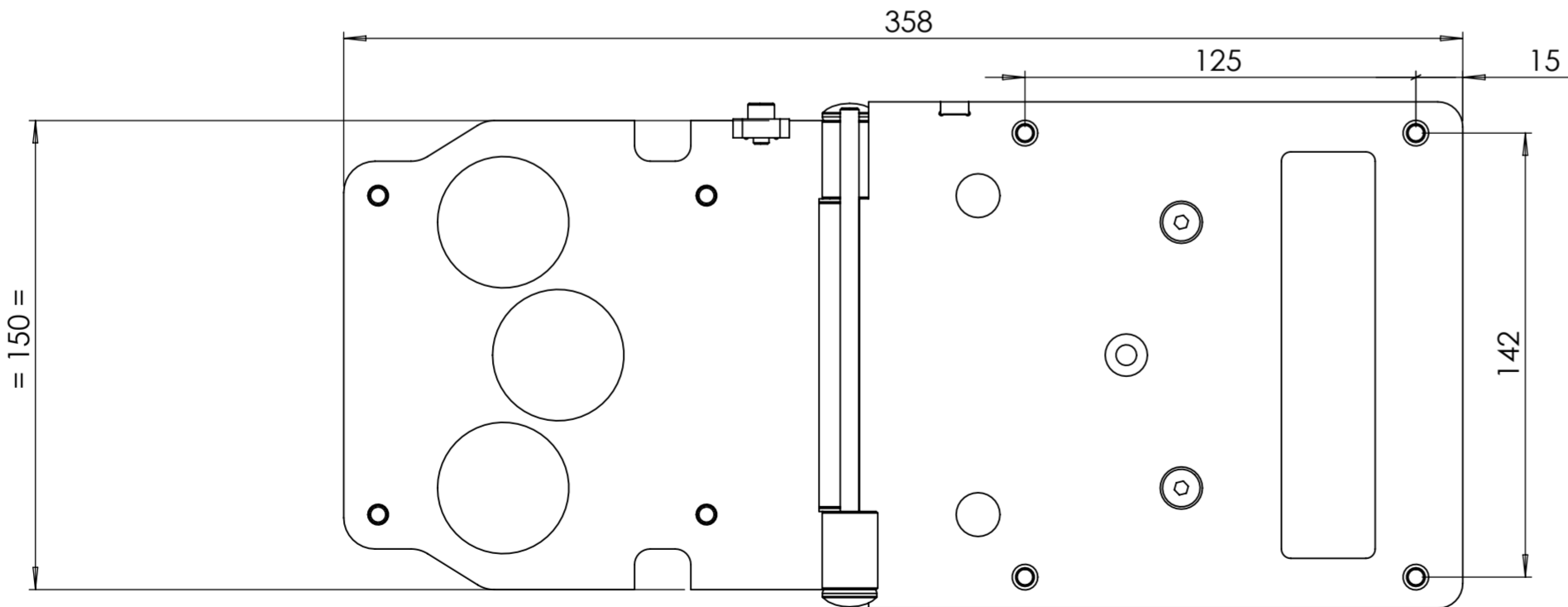
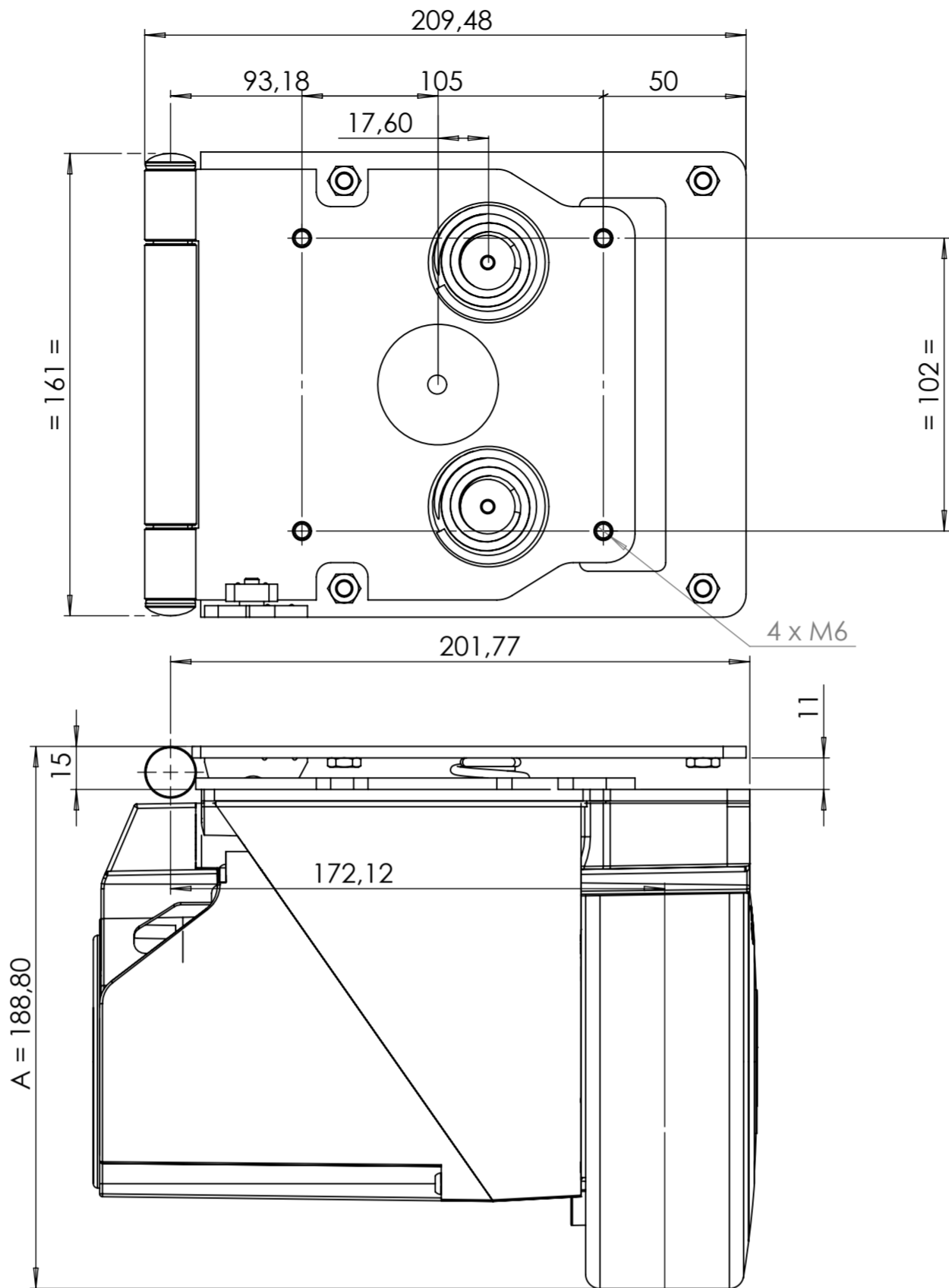
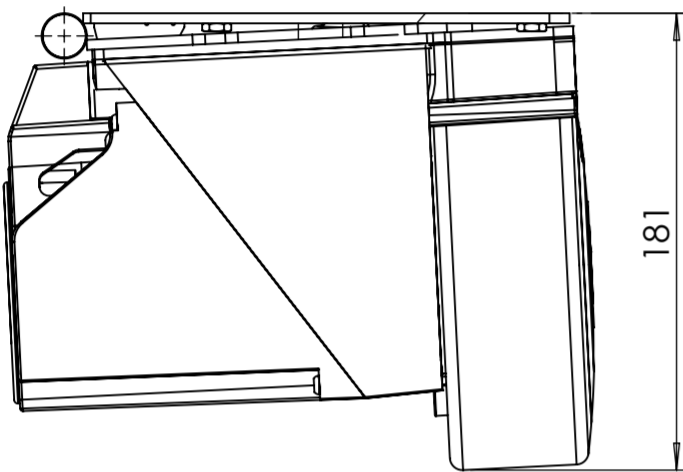


Etat Détendu




Etat Compressé



No. ARTICLE	NUMERO DE PIECE	DESCRIPTION	Révision	Quantité
1	A_201735	Sous-ensemble charnière soudée	4	1
2	C_201755	Pion fixation ressort	D	2
3	M_201743	Rondelle d'arrêt Ø6 avec chapeau type (A) dome	-	2
4	M_201744	Ressort compression conique Øfil 3-Ø40-Ø20		2
5	V_200887	VIS FHC M6x16 ACIER cl.10.9 ISO 10642		4
6	V_201810	Vis CHC M5x8 ACIER ZINGUE CL.8.8 ISO 4762		1
7	V_201809	Vis FHC M6x8 ACIER ZINGUE CLASSE 8.8 ISO 10642		2

	10/07/2015	P. Saillard	Modification quantité ressort : 3 -> 2		5	
	23/06/2015	P. Saillard	Refonte charnière		4	
	17/06/2015	P. Saillard	Revue de conception		3	
	08/06/2015	P. Saillard	Intégration palier lisse à collerette dans ss-ensemble soudé, modification ressort & ajout butée		2	
Demandeur Applicant	Date	Dess. / Draw.	Modifications / Changes			Ind.
Matière: Material: Traitement: Treatment:	- ... - ...	Masse: Weight: Superficie: Surface area :	2812.01 g 1421972.49 mm²	Volume: Weight:	2658782.66 mm³	
			Sauf indication contraires Instead of another informations		<b>CASSER LES ANGLES VIFS SHARP CORNERED</b>	

Confidentiel - Propriété de EZ WHEEL. Droits de communication strictement réservés / Confidential - Property of EZ WHEEL. All rights of communication reserved.				
Vérifié par / Check by:		...		
ENSEMBLE CHAPE AMORTIE ROUE S160				
<div><b>ez - wheel</b> The Electric Wheel PA du grand Girac, Rue Jean Doucet - 16470 ST MICHEL</div>		Dess./Draw. :	P. Saillard	Ech/Scale 1:2
		Date:	03/06/2015	Feuille Sheet 1 / 1
		Remplace/Replace:		Indice/Index
		A_201734		5